

RADIAMONT

710063-710064-710065

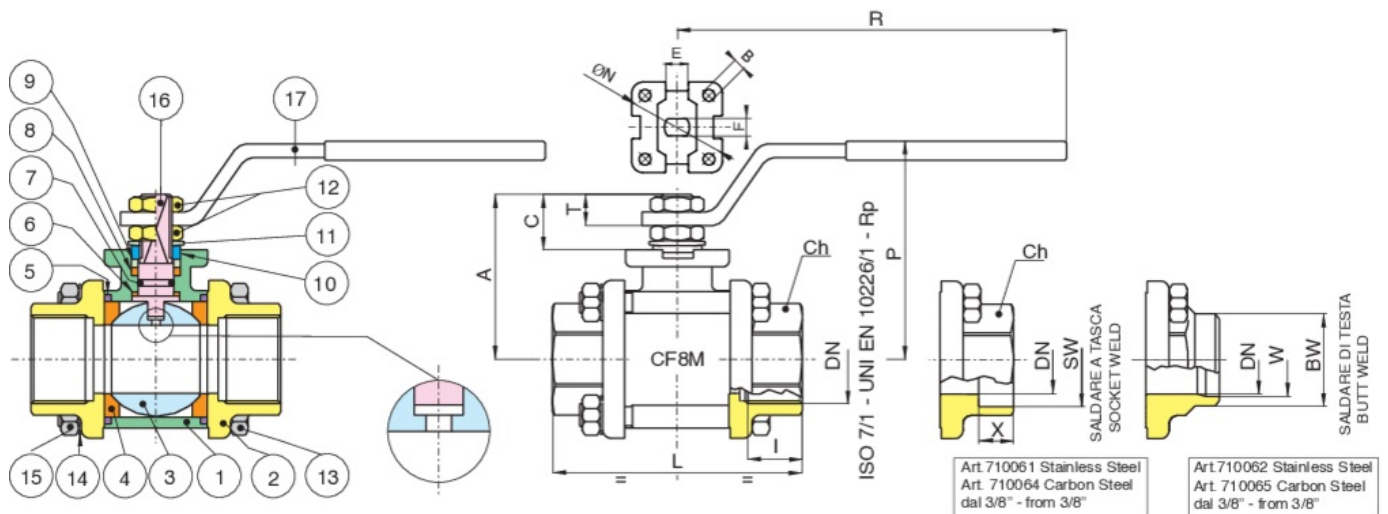


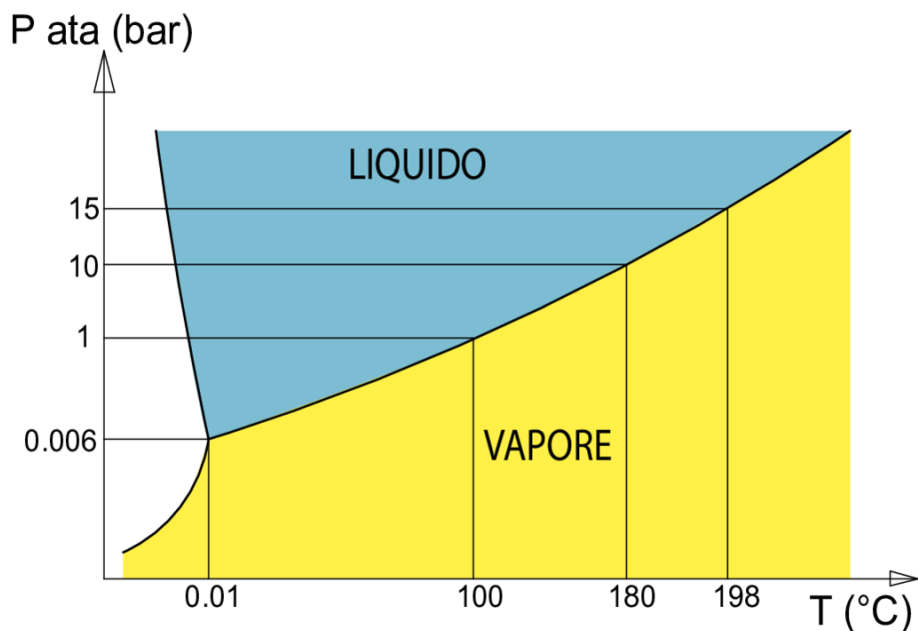
Válvula de bola de tres piezas de acero inoxidable A351-CF8M y de acero al carbono bruñido A352-LCB, roscada F/F, con soldadura a tope o a enchufe, de paso total para vapor.

V-Ball option



Technische Spezifikationen





MAXIMUM WORKING PRESSURE WITH STEAM 15 bar

Vacuum: 10⁻³ torr.

POSITION	TEILNAME	MATERIAL	NR. STÜCK
1	GEHÄUSE	A352-LCB	1
2	MUFFE	A352-LCB	2
3	KUGEL	A479-TP304/A351-CF8	1
4	KUGELDICHTUNG	PTFE+CARBOGRAFITE	2
5	O-RING	FKM	2
6	SPINDELSCHEIBE	PTFE+CARBOGRAFITE	1
7	O-RING	FKM	1
8	SPINDELDICHTUNG	PTFE+CARBOGRAFITE	1
9	VORSPANNRING	CARBON STEEL	1
10	ANSCHLAGSCHEIBE	INOX AISI 430 (1/4"-2") CARBON STEEL (2"1/2-3"-4")	2-1
11	TELLERFEDER	CARBON STEEL (2"1/2-3"-4")	2
12	MUTTER	CARBON STEEL	2
13	ZUGSTANGE	CARBON STEEL (1/4"-2")-(2"1/2- 4")	4-6
14	UNTERLEGSCHIEBE	CARBON STEEL (1/4"-2")-(2"1/2- 4")	4-6
15	MUTTER	CARBON STEEL (1/4"-2")-(2"1/2- 4")	4-6
16	SPINDEL	A479-TP304/17-4-PH	1
17	HANDHEBEL	CARBON STEEL	1

GRÖSSE	DN	CODE	BOX	SW	X	BW	W	I	L	CH	R	P	A	C	T	E	F	ØN	B	KV	PN	KG
1/4"	8	71006302-71006402-71006502	10	-	-	-	-	11	57	OT.22	110	50	35	13,5	9	8	5	-	-	5,5	64	0,28
3/8"	10	71006303-71006403-71006503	10	18,2	9,5	17,1	12,48	11,4	57	OT.22	110	50	35	13,5	9	8	5	-	-	8,5	64	0,27
1/2"	15	71006304-71006404-71006504	6	22,4	9,5	21,4	15,76	15	65	OT.27	131	64	47	15	10	10	7	36	6	19,2	64	0,50
3/4"	20	71006305-71006405-71006505	5	27,7	11,1	26,7	20,96	16,3	76	OT.32	131	68	52	16	10	10	7	42	5,5	35	40	0,70
1"	25	71006306-71006406-71006506	2	34,5	12,7	33,4	26,64	19,1	92	OT.41	174	79	60	19,5	12,5	12	8	42	6	64,5	40	1,20
1"1/4	32	71006307-71006407-71006507	4	43,2	14,3	42,2	35,08	21,4	106	OT.50	174	83	64	19,5	12,5	12	8	42	5,5	103,8	25	1,70
1"1/2	40	71006308-71006408-71006508	2	49,5	15,9	48,3	40,94	21,4	116	OT.55	250	100	79	24	16,5	16	10	50	6,5	174	25	2,50
2"	50	71006310-71006410-71006510	2	62	17,5	60,3	52,48	25,7	136	OT.70	250	107	86	24	16,5	16	10	50	6,5	301,3	25	3,90
2"1/2	65	71006312-71006412-71006512	1	76,5	20	73	62,68	30,2	153	Ø90	321	126	103	28	18	20	14	70	M8	545,7	16	8,15
3"	80	71006314-71006414-71006514	1	89,5	20	88,9	77,92	33,3	180	Ø105	321	137	114	28	18	20	14	70	M8	872,5	16	12,80
4"	100	71006318-71006418-71006518	1	115	20	114,3	102,26	39,3	217	Ø130	381	156	137	34,5	22	24	18	102	M10	1363,3	16	21,50

Zertifizierungen



TUV



ATEX FIRE-SAFE (Auf
Anfrage)

SIL 3

SIL 3

Ersatzteile

● HEBEL

Code	Material	Größe
RI2179	AISI 316	1/4"
RI2179	AISI 316	3/8"
RI2180	AISI 316	1/2"
RI2180	AISI 316	3/4"
RI2181	AISI 316	1"
RI2181	AISI 316	1"1/4
RI2182	AISI 316	1"1/2
RI2182	AISI 316	2"
RI2183	AISI 316	2"1/2
RI2183	AISI 316	3"
RI2184	AISI 316	4"
RI2143	A 37	1/4"
RI2143	A 37	3/8"
RI2018	A 37	1/2"
RI2018	A 37	3/4"
RI2019	A 37	1"
RI2019	A 37	1"1/4
RI2020	A 37	1"1/2
RI2020	A 37	2"
RI2016	A 37	2"1/2
RI2016	A 37	3"
RI2017	A 37	4"

● DICHTUNGEN

Code	Material	Größe
RI2000	PTFE VETRO - GLASS FILLED PTFE	1/4"
RI2000	PTFE VETRO - GLASS FILLED PTFE	3/8"
RI2001	PTFE VETRO - GLASS FILLED PTFE	1/2"
RI2002	PTFE VETRO - GLASS FILLED PTFE	3/4"
RI2003	PTFE VETRO - GLASS FILLED PTFE	1"
RI 2004	PTFE VETRO - GLASS FILLED PTFE	1"1/4
RI2005	PTFE VETRO - GLASS FILLED PTFE	1"1/2
RI2006	PTFE VETRO - GLASS FILLED PTFE	2"
RI2007	PTFE VETRO - GLASS FILLED PTFE	2"1/2
RI2039	PTFE VETRO - GLASS FILLED PTFE	3"
RI2040	PTFE VETRO - GLASS FILLED PTFE	4"

● DICHTUNGEN FÜR DAMPF

Code	Material	Größe
RI1074	PTFE CARBOGRAFITE - CARBON FILLED PTFE	1/4"
RI1074	PTFE CARBOGRAFITE - CARBON FILLED PTFE	3/8"
RI1075	PTFE CARBOGRAFITE - CARBON FILLED PTFE	1/2"
RI1076	PTFE CARBOGRAFITE - CARBON FILLED PTFE	3/4"
RI1077	PTFE CARBOGRAFITE - CARBON FILLED PTFE	1"
RI1078	PTFE CARBOGRAFITE - CARBON FILLED PTFE	1"1/4
RI1079	PTFE CARBOGRAFITE - CARBON FILLED PTFE	1"1/2
RI1080	PTFE CARBOGRAFITE - CARBON FILLED PTFE	2"
RI1081	PTFE CARBOGRAFITE - CARBON FILLED PTFE	2"1/2
RI1082	PTFE CARBOGRAFITE - CARBON FILLED PTFE	3"
RI1083	PTFE CARBOGRAFITE - CARBON FILLED PTFE	4"
RI1074	PTFE CARBOGRAFITE - CARBON FILLED PTFE	1/4"
RI1074	PTFE CARBOGRAFITE - CARBON FILLED PTFE	3/8"
RI1075	PTFE CARBOGRAFITE - CARBON FILLED PTFE	1/2"
RI1076	PTFE CARBOGRAFITE - CARBON FILLED PTFE	3/4"
RI1077	PTFE CARBOGRAFITE - CARBON FILLED PTFE	1"
RI1078	PTFE CARBOGRAFITE - CARBON FILLED PTFE	1"1/4
RI1079	PTFE CARBOGRAFITE - CARBON FILLED PTFE	1"1/2
RI1080	PTFE CARBOGRAFITE - CARBON FILLED PTFE	2"
RI1081	PTFE CARBOGRAFITE - CARBON FILLED PTFE	2"1/2
RI1082	PTFE CARBOGRAFITE - CARBON FILLED PTFE	3"
RI1083	PTFE CARBOGRAFITE - CARBON FILLED PTFE	4"

● DICHTUNGEN VOLLSCHALE HOHLRAUMFREI

Code	Material	Größe
RI2085	PTFE	1/4"
RI2085	PTFE	3/8"
RI2086	PTFE	1/2"
RI2087	PTFE	3/4"
RI2088	PTFE	1"
RI2089	PTFE	1"1/4
RI2090	PTFE	1"1/2
RI2091	PTFE	2"
RI2092	PTFE	2"1/2
RI2093	PTFE	3"
RI2094	PTFE	4"

● KUGEL

Code	Material	Größe
00301000002	AISI 316	1/4"
00301000002	AISI 316	3/8"
00304000046	AISI 304	1/2"
00305000075	AISI 304	3/4"
00306000038	AISI 304	1"
00307000059	AISI 304	1"1/4
00308000059	AISI 304	1"1/2
00310000098	AISI 304	2"
00312000030	AISI 304	2"1/2
00314000032	AISI 304	3"
00318007002	AISI 304	4"

● SPINDEL

Code	Material	Größe
00401000003	AISI 316	1/4"
00401000003	AISI 316	3/8"
00405000061	AISI 304	1/2"
00405000061	AISI 304	3/4"
00406000046	AISI 304	1"
00406000046	AISI 304	1"1/4
00408007003	AISI 304	1"1/2
00408007003	AISI 304	2"
00412000054	AISI 304	2"1/2
00412000054	AISI 304	3"
00418000037	AISI 304	4"
00401000003	AISI 316	1/4"
00401000003	AISI 316	3/8"
00405000061	AISI 304	1/2"
00405000061	AISI 304	3/4"
00406000046	AISI 304	1"
00406000046	AISI 304	1"1/4
00408000051	AISI 304	1"1/2
00408000051	AISI 304	2"
00412000054	AISI 304	2"1/2
00412000054	AISI 304	3"
00418000037	AISI 304	4"
00401000003	AISI 316	1/4"
00401000003	AISI 316	3/8"
00405000029	AISI 316	1/2
00405000029	AISI 316	3/4"
00406000011	AISI 316	1"
00406000011	AISI 316	1"1/4
00408000010	AISI 316	1"1/2
00408000010	AISI 316	2"
00412000021	AISI 316	2"1/2
00412000021	AISI 316	3"

● SPINDEL ANTISTATISCHE AUSFÜHRUNG

Code	Material	Größe
00418000006	AISI 316	4"